

# DRASH®

THE WARFIGHTER'S CHOICE

## DRASH JNN APPLICATIONS



Deployable Rapid Assembly Shelter (DRASH) Satellite Transportable Terminal (STT) Shelter Systems join STT communications technology and rugged and reliable DRASH shelters to form a complete integrated shelter system.

Utilizing the DRASH STT Booting System, which is easily set up by two (2) personnel in less than 10 minutes, users can connect the STT to DRASH shelters, including the U.S. Army's Standard Integrated Command Post Systems (SICPS) TMSS Medium and TMSS Large, providing a larger, more effective work area from which they can operate communications equipment regardless of harsh weather and environmental conditions.

DRASH STT Shelter Systems can also be used with other similar vehicle communications platforms, such as the Standard Integrated Command Post System (SICPS), Integrated Platform Solutions (IPS) Logistics Support, and Air Defense Airspace Management (ADAM) Cell.

### DRASH FEATURES:

- Six different series of DRASH shelters are available in 45 models ranging in size from 109 – 1,250 square feet.
- DRASH UST Trailers come in ten standard models and configurations and allow for a completely mobile lighting and environmental control power package.
- Shelters can be interconnected to increase or decrease an overall structure's footprint.
- Unique "one-piece" shelter design – no loose parts or pieces to assemble or misplace.
- Operable in temperatures ranging from -50°F to +131°F (-45.5°C to 55°C).
- Able to withstand a steady wind of 55 mph with gusts up to 65 mph for 30 minutes.
- Able to withstand a minimum of 36 erect/strike cycles without structural damage.
- Optional shelter support equipment, including heaters and power distribution units, are available to further enhance shelter systems.
- Meet all U.S. Military requirements for soft-walled shelters.
- Five year warranty for materials and workmanship.

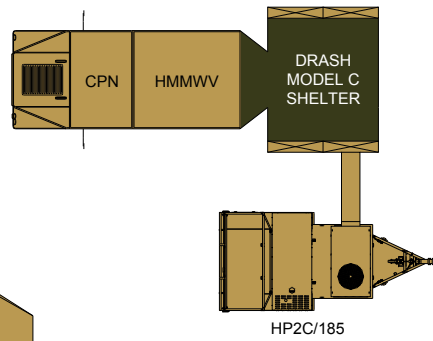
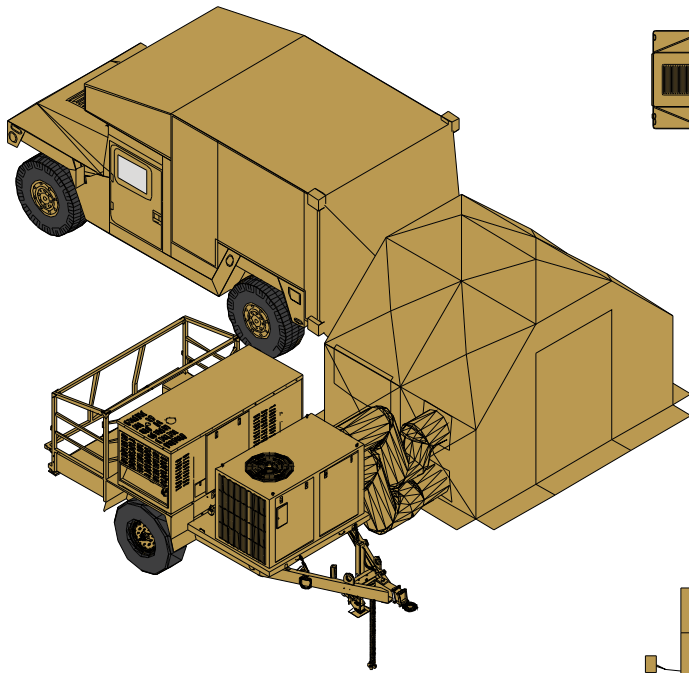
### BOOT FEATURES:

- Light-tight fabric connections between a vehicle and any DRASH shelter.
- Ensures convenient and tactically safe movement from inside a shelter, providing a more effective work or command area.
- Vinyl-coated fabric is fire retardant, mildew resistant, water repellent, abrasion resistant, UV resistant, and includes blackout in the visual and near infrared spectrum.
- Operable in temperatures ranging from -50° to 131°F (-45.5°C to 55°C).
- Five-year warranty for materials and workmanship.

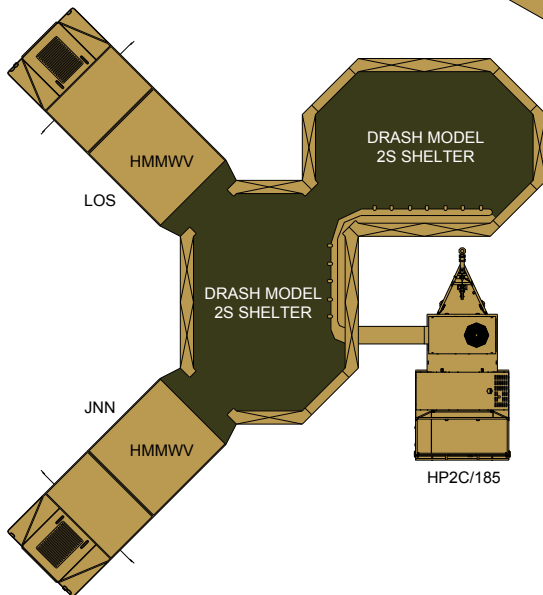
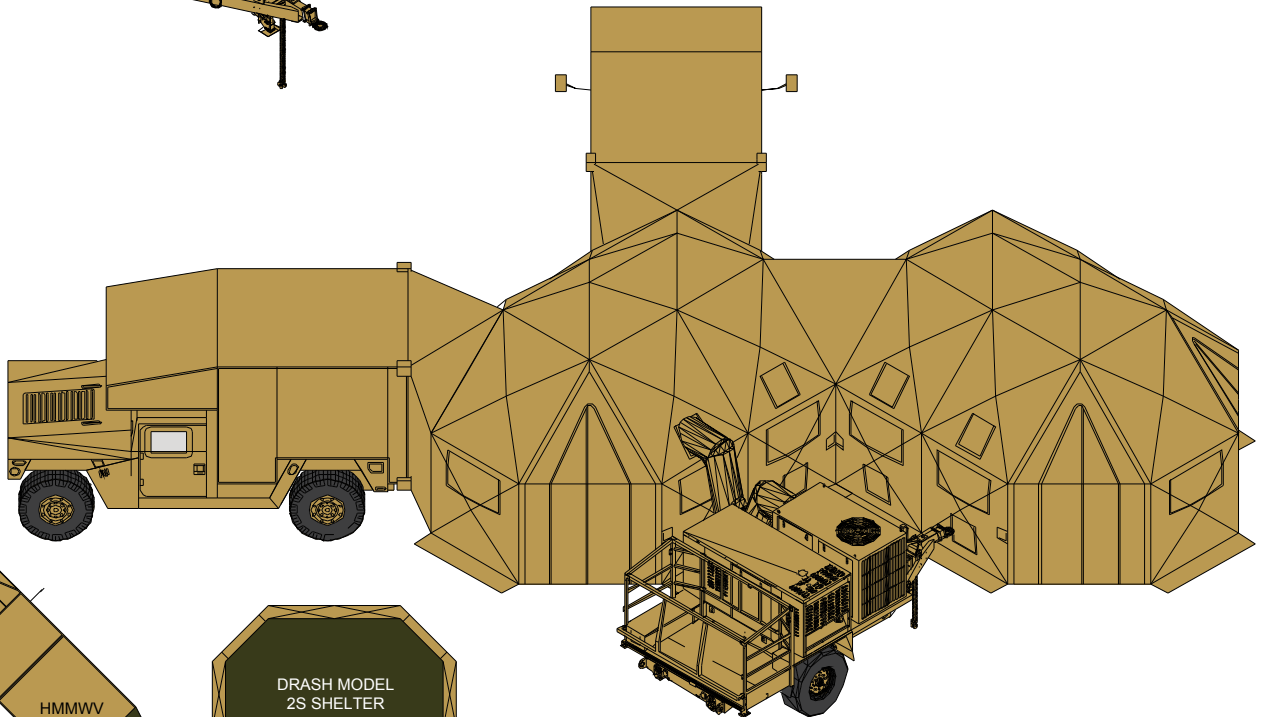
**DHS SYSTEMS** LLC  
A DHS TECHNOLOGIES COMPANY

1-877-GO-DRASH    drash@drash.com    www.drash.com

# DRASH JNN APPLICATIONS



**COMMAND POST NODE (CPN)**



**JOINT NETWORK NODE (JNN) /  
SINGLE SHELTER SWITCH (SSS)**